

Altiris™ Server Management Suite 7.0

Essential server management: Discover, provision, manage, and monitor

Overview

Complexity with physical and virtual machine proliferation increases the challenges involved in managing servers. Server administrators perform many repetitive manual IT tasks. Manual tasks lead to inconsistencies. Inconsistencies lead to downtime. Most downtime is caused by unauthorized changes or human error. Ensuring that corporate guidelines are met and servers are running properly can be daunting tasks for IT professionals. Altiris™ Server Management Suite from Symantec helps to reduce the cost and complexity of managing servers.

Server environment

Contributing factors to server management complexities include the recent price/performance efficiencies for servers, virtualization, tiered Web applications, adopting industry best practices, and the constant pressure to increase quality of service.

Server Management Suite provides quick value to your IT organization with:

- Quicker time to bring servers online for new business
- More uptime value for your customers

The combination of complementary tools in the same console provides greater power and capability. You can back up a server before patching, trigger an alert to send a self-healing configuration script, or automate provisioning, patching, and preconfigured monitoring of a new virtual server.

Key features

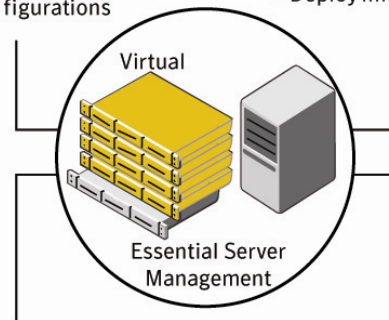
In the following figure, Server Management Suite provides crucial functionality for all servers in your environment.

Discovery and Inventory

- Comprehensive server inventory
- View reports on server configurations

Provisioning

- Automate server builds
- Pre-built factory jobs
- Deploy images or scripts



Monitoring and Alerting

- Aggregate view of server status
- Automate self-healing tasks
- Central Event Console

Software and Patch Management

- Automate server patching
- Baseline server configurations
- Centralized software catalog

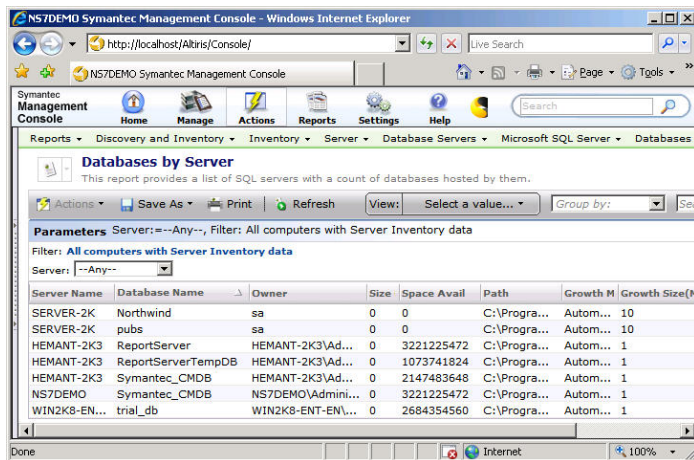
Altiris Server Management Suite 7.0 includes the essentials for server management. With Symantec products, such as Server Management Suite, you can manage more technologies, with greater efficiency, on more platforms.

Essential server management

Server Management Suite provides IT administrators with an essential solution for managing physical and virtual servers. Designed to simplify the entire server lifecycle, the suite provides solutions to discover, provision, manage, and monitor servers from a central console to reduce service interruptions and increase uptime.

Discovery and inventory

Save time and minimize errors by automating the discovery of network devices in your environment. With Server Management Suite you can determine the relationship with your servers and network devices.



Server Name	Database Name	Owner	Size	Space Avail	Path	Growth M	Growth Size(M)
SERVER-2K	Northwind	sa	0	0	C:\Progra...	Autom...	10
SERVER-2K	pubs	sa	0	0	C:\Progra...	Autom...	10
HEMANT-2K3	ReportServer	HEMANT-2K3\Ad...	0	3221225472	C:\Progra...	Autom...	1
HEMANT-2K3	ReportServerTempDB	HEMANT-2K3\Ad...	0	1073741824	C:\Progra...	Autom...	1
HEMANT-2K3	Symantec_CMDB	HEMANT-2K3\Ad...	0	2147483648	C:\Progra...	Autom...	1
NS7DEMO	Symantec_CMDB	NS7DEMO\Admini...	0	3221225472	C:\Progra...	Autom...	1
WIN2K8-EN...	trial_db	WIN2K8-ENT-ENV...	0	2684354560	C:\Progra...	Autom...	1

Server Management Suite provides server administrators with reports for server databases.

Comprehensive inventory of server-specific information allows you to increase accuracy and speed when gathering configuration details, and you can track drifts from standard builds with interim reports on baseline changes. Accurate information helps to make data-driven decisions for budgets, migrations, consolidation, and server application requirements.

Provisioning

Server Management Suite helps you maximize resources and reduce errors by standardizing builds and provisioning popular servers. The suite supports physical, virtual, and blade servers. You can build servers from bare metal and develop custom tasks for

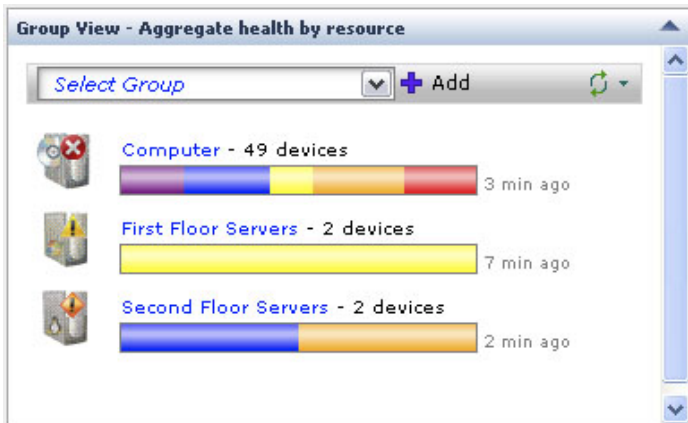
configuring servers before and after installing the operating system. And you can improve the consistency and increase the quality of server configurations. The suite's powerful provisioning features include industry-leading imaging technology from Symantec Ghost™, which helps you save time when changing off-line images and support heterogeneous servers with the same console.

Software and patch management

Once your servers are efficiently provisioned, use Server Management Suite to control server configurations through its software management capabilities. For example, remediate any configuration drifts with a policy-based delivery framework, and store, organize, and secure complex server applications with the centralized Definitive Software Library. You can also extend software management by automating the patching of server operating systems. Update current SUSE® Linux Enterprise Server and Red Hat® Enterprise Linux servers without additional infrastructure such as satellite servers.

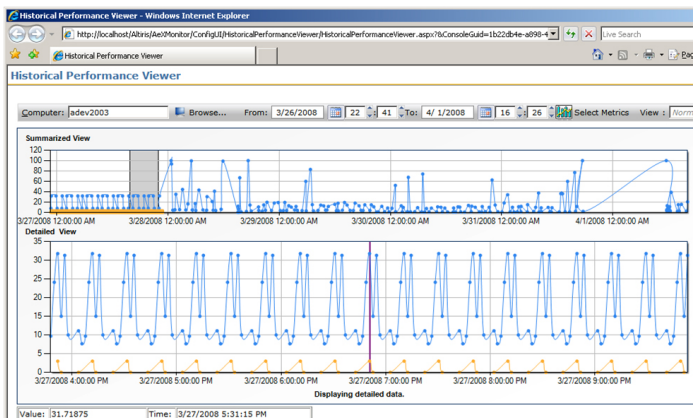
Monitoring and alerting

Server administrators increase uptime by proactively monitoring critical components.



With Server Management Suite you can use group views to show aggregated server health by resource.

Use Server Management Suite's newly designed dashboard to organize servers into vital groups to provide a quick status of current health. You can save time with self-healing remediation tasks configured before critical events occur. The suite allows you to analyze and resolve challenges faster with the flexible historical performance viewer.



Server Management Suite allows you to view historical performance.

New for Server Management Suite 7.0

Complete process automation

It's less about the tools and more about the people and process. Now you can expand process automation to orchestrate the timely interaction between people and systems management with Server Management Suite's expanded task management capabilities.

Enhanced day-to-day operations

Spend more time managing and less time configuring. Server Management Suite provides enhanced centralized management and actionable information. Managing systems from within reports is as close as a right-click of the mouse. In addition, the suite's expanded report-building capability options provide IT with more options for creating the reports they need.

Improved provisioning

Streamline and automate complex server builds. Server Management Suite supports recent technologies for the latest server operating systems, including Windows Server® 2008 and Linux®. In addition, the suite provides close integration with popular server hardware from Dell, HP, IBM, and others.

Enhanced monitoring and alerting

View current health and increase uptime. A variety of monitoring and alerting options ensure that IT administrators are kept constantly up to date on problem status and remediation actions. You also have the option of agentless or agent-based monitoring.

Expanded management

Manage more technologies, with greater efficiency, on more platforms. With simplified installation and configuration features, you can install and configure Server Management Suite more quickly than ever before. The suite has greater flexibility and expandability with support for server hierarchy, policy, and data replication.

Extending Server Management Suite

You have established an essential base for server management with the installation of Server Management Suite. Now you are prepared to take your IT environment to the next level by including the following options that complement the suite.

Symantec Backup Exec™ System Recovery—The gold standard in complete Windows® system recovery, with the ability to restore systems in minutes, not hours or days, even to dissimilar hardware and virtual environments.

Veritas™ Configuration Manager—Automatically discover server and software configurations, dynamically map dependencies, and track changes in real time. This solution provides unparalleled visibility into the IT environment and helps pinpoint changes, minimize application downtime, and resolve problems.

Symantec™ Endpoint Protection 11.0—Combines Symantec AntiVirus™ with advanced threat prevention to deliver unmatched defense against malware for servers.

Altiris™ Client Management Suite—Automates time-consuming and redundant tasks to reduce the effort and costs associated with deploying, managing, securing, and troubleshooting client systems so organizations can gain control of their IT environments.

Altiris™ Service & Asset Management Suite

Suite—Combines enterprise asset and service management into a single Web-based architecture, repository, and console.

Altiris™ Total Management Suite—The industry's most comprehensive suite of IT lifecycle automation solutions is designed to help IT organizations manage, secure, and support all IT assets.

System requirements

Symantec Management Platform: Symantec Management Console, database, and Notification Server

- .NET Framework 3.5
- Internet Explorer® 7
- SQL Server® 2005 or better
- Windows 2003 Server or better
- Altiris™ Notification Server 6.0 SP3 R8 or later
- Windows Automated Installation Kit (AIK) for Windows Server 2008

Windows Server agent

- Windows 2000 Server SP4 or later
- Windows Server 2003 (SP1/SP2/R2) x64/x86 or later
- Windows Server 2008 x64/x86 or later

Note: If you want to manage Windows NT® 4 and below, you must maintain Notification Server 6.x and run Altiris 6.x solutions.

UNIX agents

- AIX™
- HP-UX™
- Solaris™

Linux and VMware agents

- Red Hat Enterprise Linux 3, 3 (x86_64), 4, 4 (x86_64), 5, 5 (x86_64)
- SUSE Linux Enterprise Server 9, 9 (x86_64), 10, 10 (x86_64)
- VMware® ESX Server 3.0.1, 3.0.2, 3.5

Note: Not all Server Management Suite features are supported on all platforms.

Visit our website

<http://www.symantec.com/business/server-management-suite>

Contact us today

Call toll-free 1 (800) 745 6054

To speak with a Product Specialist outside the U.S.

For specific country offices and contact numbers, please visit our website.

About Symantec

Symantec is a global leader in providing security, storage, and systems management solutions to help businesses and consumers secure and manage their information. Headquartered in Cupertino, Calif., Symantec has operations in more than 40 countries. More information is available at www.symantec.com.

Symantec World Headquarters

20330 Stevens Creek Blvd.
Cupertino, CA 95014 USA
+1 (408) 517 8000
1 (800) 721 3934
www.symantec.com

Confidence in a connected world.

